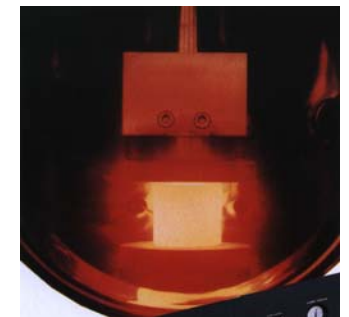
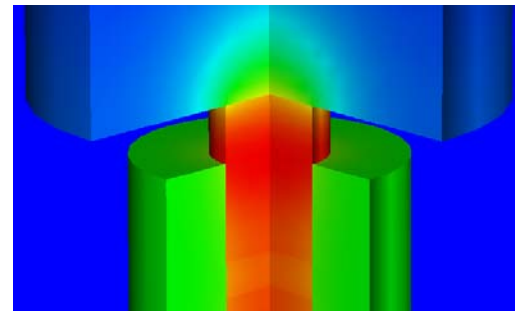
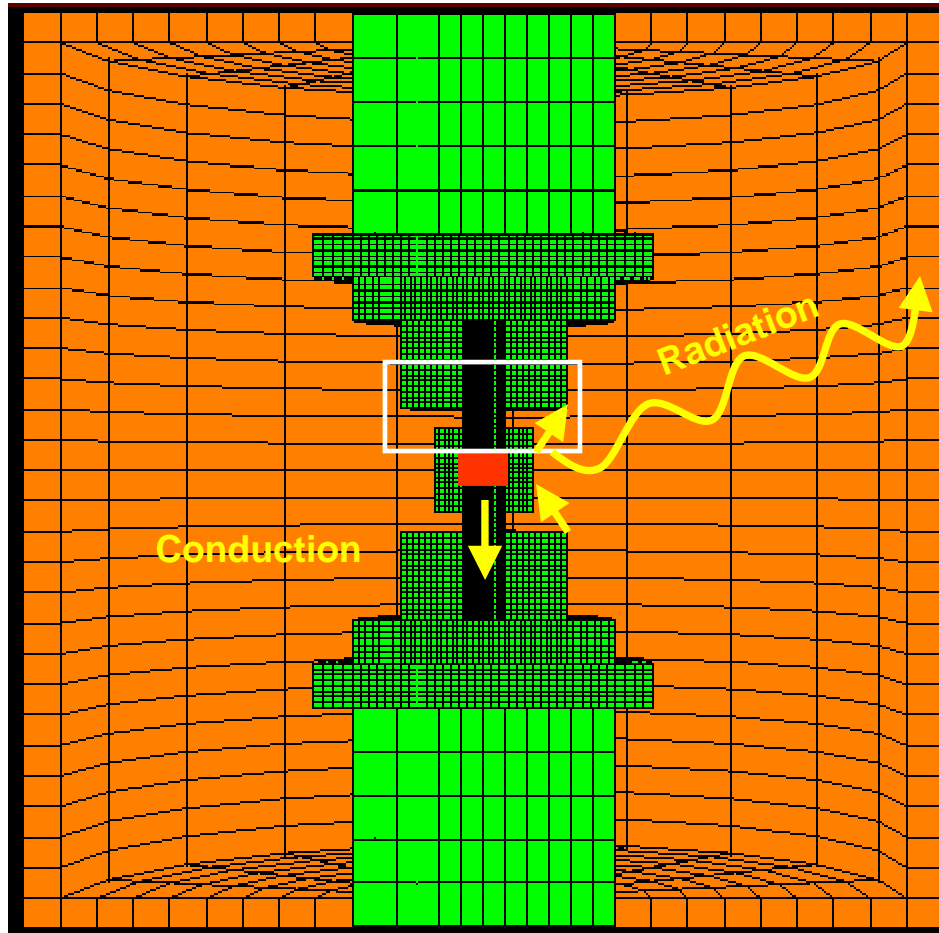


Finite Element Modeling of Field Activated Sintering Technology

Dr. Jing Zhang

ffjz1@uaf.edu
(907) 474-6135



Temperatures: Simulation vs. Experiment

Radiation, conduction are considered.
Axial-symmetric element is actual employed.

Note the temperature difference between sample and punch; also between sample and die surface.